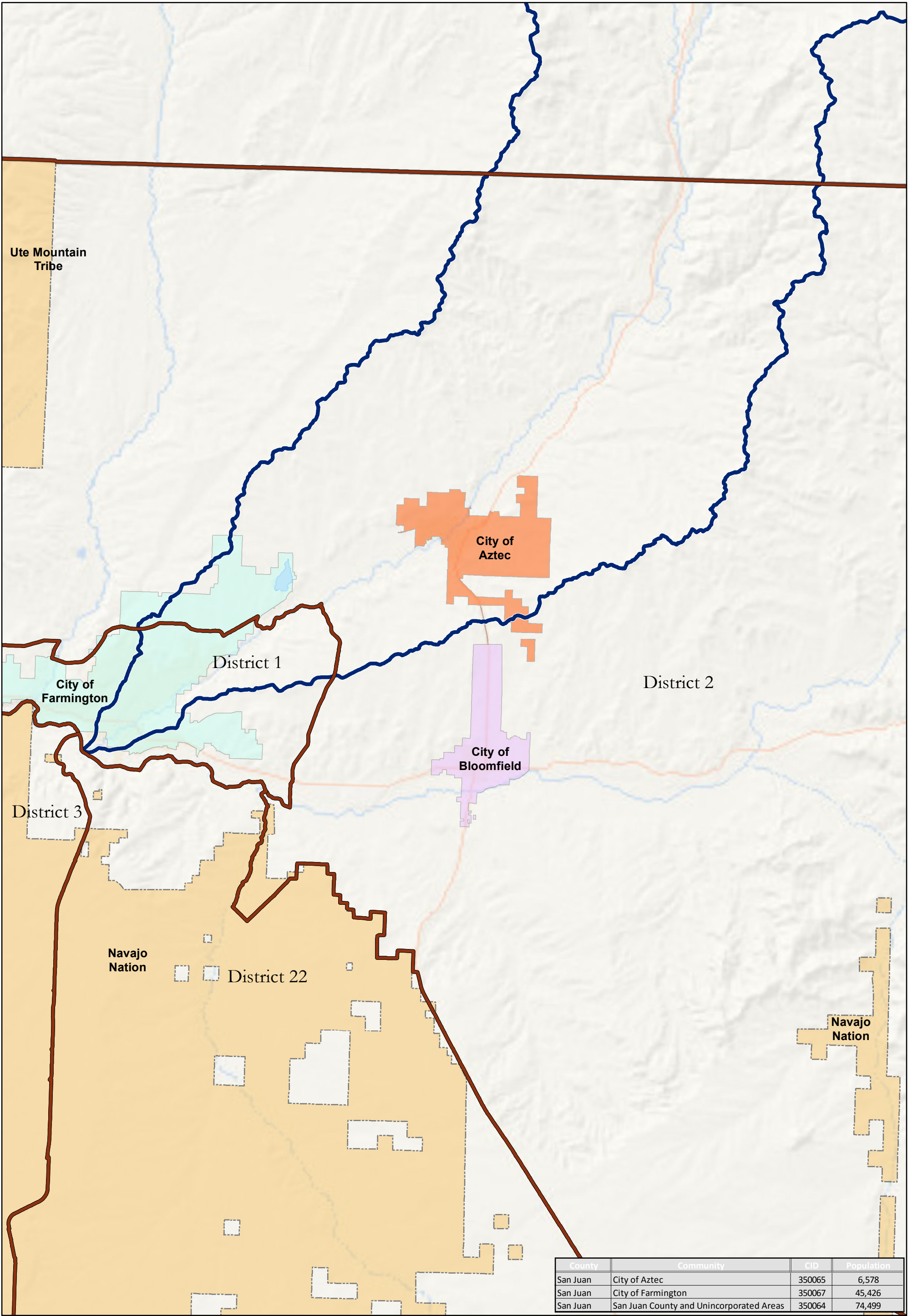


Discovery Map: Animas Watershed Locator Map with State Senate Districts



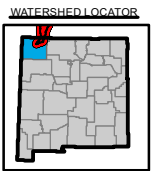
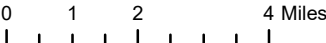
County	Community	CID	Population
San Juan	City of Aztec	350065	6,578
San Juan	City of Farmington	350067	45,426
San Juan	San Juan County and Unincorporated Areas	350064	74,499

Map Symbology

- Senate Districts
- HUC 8 Boundary
- Water Body

NOTES TO USERS
All information on this map came from public data. Imagery, roads, and political boundaries were supplied by the New Mexico Resource Geographic Information System and ESRI. Hydrographic Features (Streams and HUC Boundaries) were provided by the USGS National Hydrography Dataset (NHD) or delineated using USGS NED data. Population data are from the US Census Bureau American FactFinder website.

For more information about the data displayed on this map please contact:
Earth Data Analysis Center, UNM
MSC01 1110 1 University of New Mexico
Albuquerque, New Mexico 87131-0001



NATIONAL FLOOD INSURANCE PROGRAM
DISCOVERY MAP: LOCATOR

ANIMAS WATERSHED
NEW MEXICO & COLORADO

EDAC

HUC-8 Code
14080104

RELEASE DATE
07/19/2016

FEDERAL EMERGENCY MANAGEMENT AGENCY
FEMA