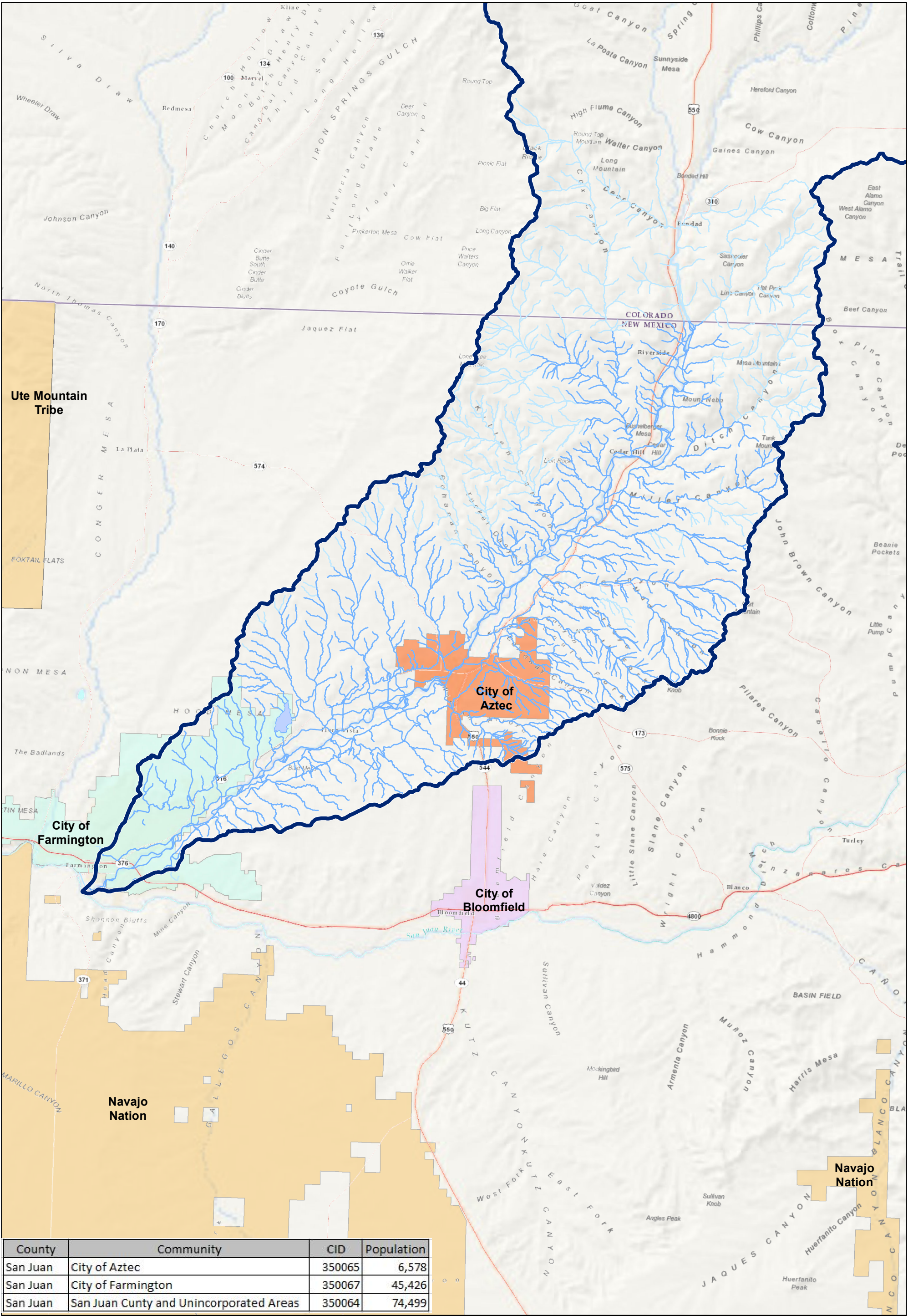


Discovery Map: Animas Locator Map



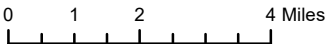
Map Symbology

- Proposed Base Level Engineering (BLE) Streams
- Stream Lines
- Water Body
- HUC 8 Boundary

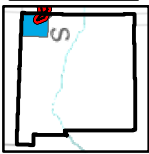
NOTES TO USERS

All information on this map came from public data. Imagery, roads, and political boundaries were supplied by the New Mexico Resource Geographic Information System and ESRI. Hydrographic Features (Streams and HUC Boundaries) were provided by the USGS National Hydrography Dataset (NHD) or delineated using USGS NED data. Population data are from the US Census Bureau American FactFinder website.

For more information about the data displayed on this map please contact:
Earth Data Analysis Center, UNM
MSC01 1110 1 University of New Mexico
Albuquerque, New Mexico 87131-0001



WATERSHED LOCATOR



NATIONAL FLOOD INSURANCE PROGRAM
DISCOVERY MAP: LOCATOR

ANIMAS WATERSHED
NEW MEXICO & COLORADO

HUC-8 Code
14080104

RELEASE DATE
07/18/2016