



New Mexico's Risk MAP Program

Rio Hondo Watershed
Discovery

Pre-Discovery Webinar

September 4, 2014

Bill Borthwick, State NFIP Coordinator



Agenda

- What is Risk MAP?
- Discovery: The First Step
- Why is Discovery Important?
- What is a Watershed/Watershed Approach?
- Rio Hondo Watershed History
- Meetings and Participants
- Data to be Collected from the Community
- Next Steps



What is Risk MAP?

- **Mapping** – Identification of areas of natural hazard risk
- **Assessment** – Review and analysis of hazard areas
- **Planning** – Mitigation activities to reduce risk

Discovery: The First Step

- Holistic view of a geographic area; watersheds cross jurisdictional borders – Ownership of Risk
- Develop partnerships, combine resources, share flood risk information, develop a vision for the watershed – Whole Community
- Identifying and empowering communities to take action to reduce their flood risk - Resiliency

Why is Discovery Important?

- First face-to-face meeting in the watershed
- Know your risk
- Review Mitigation Plans
- Discuss mitigation opportunities
- Provide flood risk information



What is a Watershed?

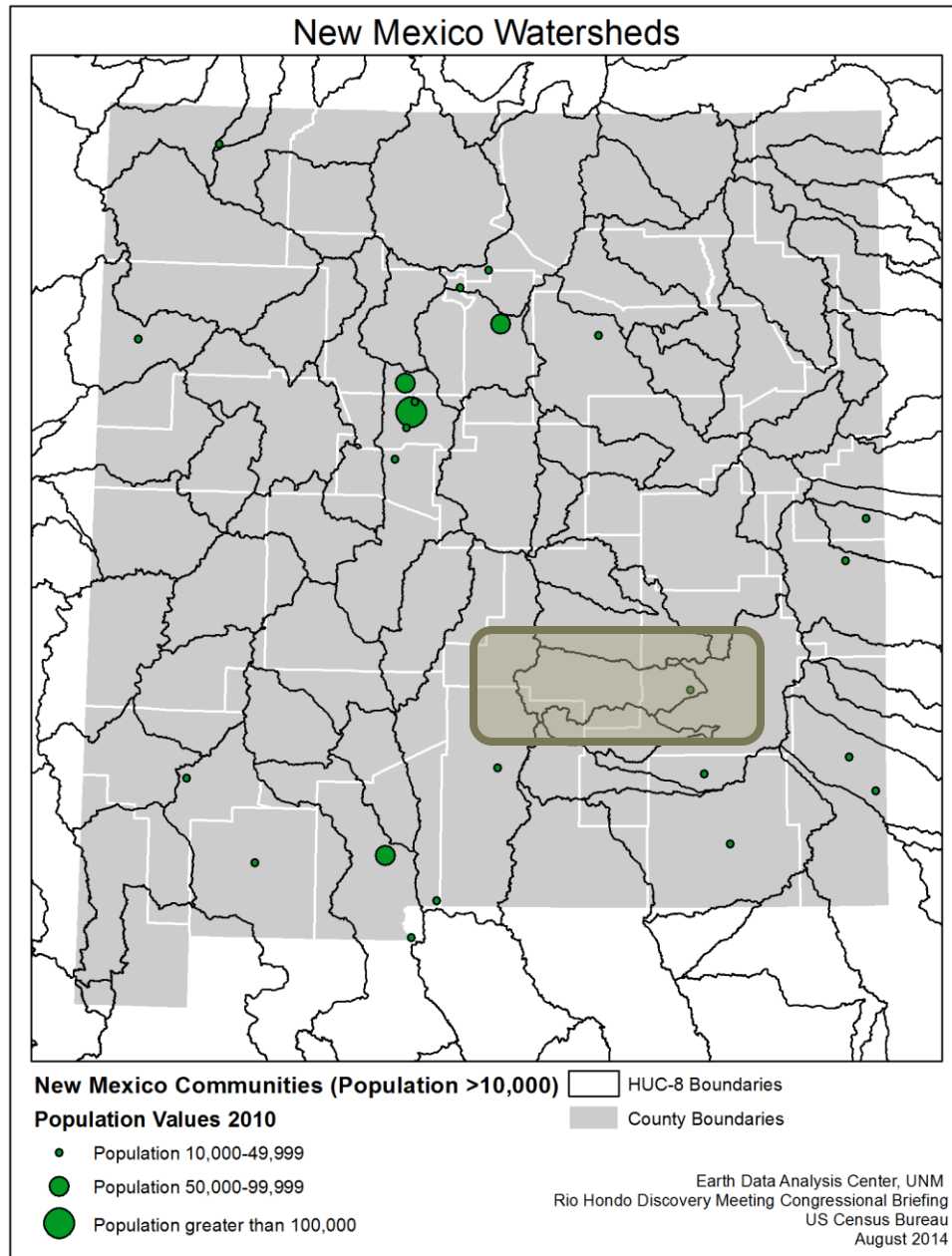
- An area of land that drains into a common waterway, such as a stream, lake, wetland, aquifer, or even the Gulf of Mexico
- All sizes and shapes
- Cross county, state, tribal, and national boundaries

Why the Watershed Approach?

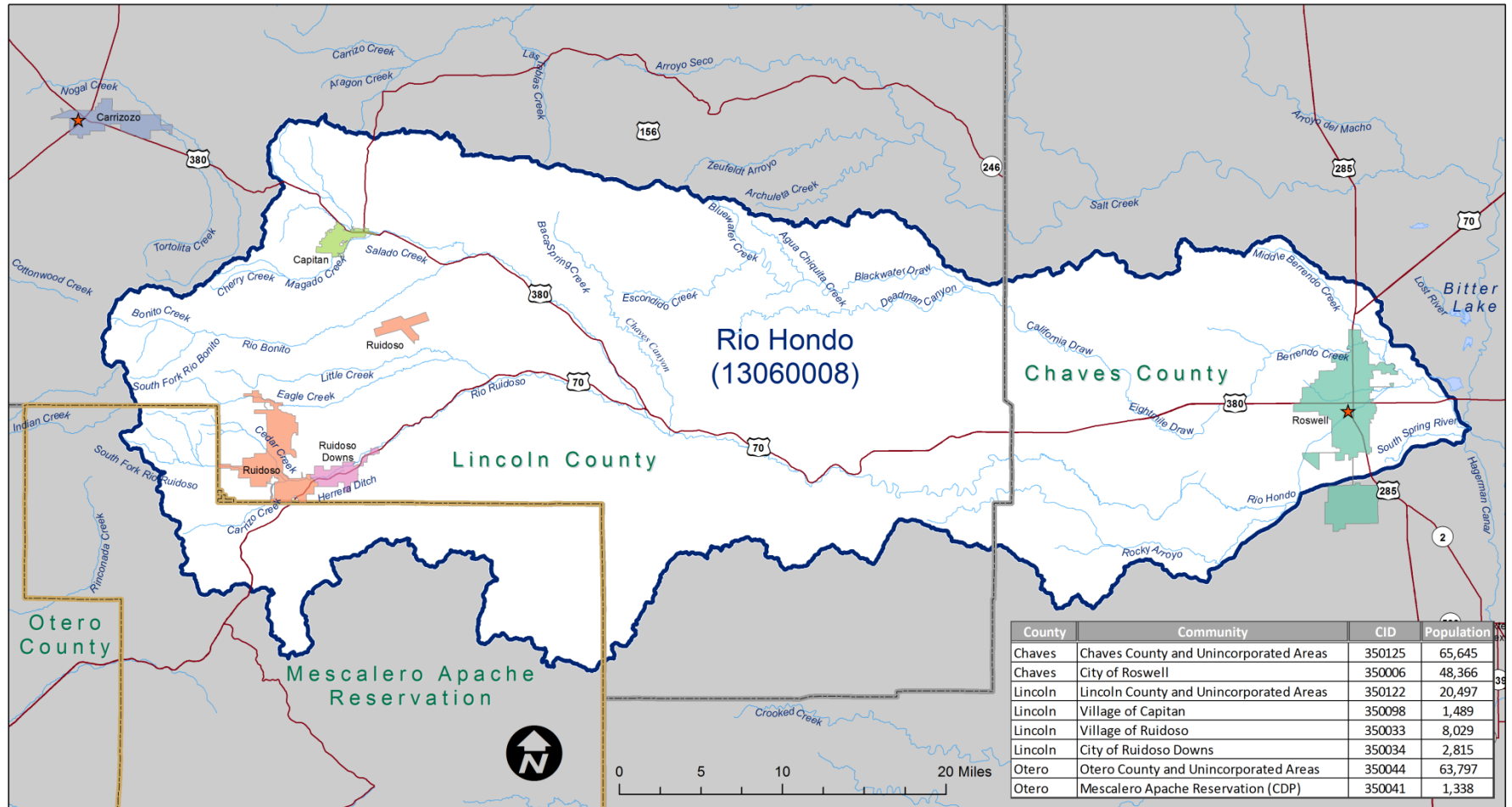
- Brings communities together
- Better representation of local flood risks
- Community participation leads to success
- Helps to establish watershed-based partnerships
- Helps local officials:
 - ✓ Plan for the risk
 - ✓ Take action to protect communities
 - ✓ Communicate the risk to citizens



New Mexico Watershed Map



Discovery Map: Rio Hondo Watershed Locator Map



MAP SYMBOLLOGY

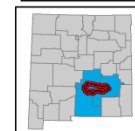
- HUC-8 Boundary
- Major Road
- County Boundary
- County Seat
- Reservation Boundary
- Lake
- Municipal Boundary
- River

NOTES TO USERS

All information on this map came from public data. Imagery, roads, and political boundaries were supplied by the New Mexico Resource Geographic Information System and ESRI. Hydrographic Features (Streams and HUC Boundaries) were provided by the USGS National Hydrography Dataset (NHD) or delineated using USGS NED data. Population data are from the US Census Bureau American FactFinder website.

For more information about the data displayed on this map please contact:
 Earth Data Analysis Center, UNM
 MSC01 1110 1 University of New Mexico
 Albuquerque, New Mexico 87131-0001

WATERSHED LOCATOR



NATIONAL FLOOD INSURANCE PROGRAM
 DISCOVERY MAP: LOCATOR

RIO HONDO WATERSHED
 NEW MEXICO

FEMA

HUC-8 Code
 13060008

RELEASE DATE
 06/03/2014

History and Local Issues

- Watershed encompasses an area of approximately 1,662 square miles and 71,301 in population
- Extends across 3 counties, 4 communities, and 1 reservation
- 3 counties, 4 communities in the NFIP
- Primary river is the Rio Hondo
- Watershed affected by 20 wildfires between 2000 and 2013
- Watershed affected by September 2013 flooding event
- Watershed affected by several flooding events in 2014
- Watershed in 16 flood related federal disaster declarations

Discovery Meetings

Meeting 1	Monday September 8, 2014 1:00 pm – 4:00 pm	Chaves County Commission Chambers #1 Saint Mary's Place Roswell, NM 88203
Meeting 2	Tuesday September 9, 2014 9:00 am – 12:00 pm	Lincoln County Sub- Office 115 Kansas City Road Ruidoso, NM 88345

Participants in Discovery

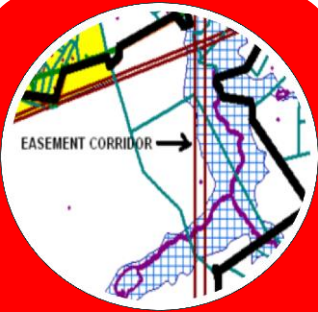
- State National Flood Insurance Program (NFIP) Coordinator
- State Hazard Mitigation Officer
- State Floodplain Management Association
- Local elected officials
- Regional authorities
- Local floodplain administrators
- Local emergency management officials
- Local watershed groups

What Kind of Information?

- Areas of repeated flooding and insurance claims
- Future development plans
- Areas of low water crossings
- High water marks from recent floods
- Areas of evacuation during high water
- Wildfire perimeters
- Master drainage plans, flood risk reduction projects and large areas of fill placement
- Local Hazard Mitigation Plans
- Other flood risk information

What Mitigation Actions will you take?

- Mitigation is any sustained action taken to reduce or eliminate long-term risk to life and property
 - What are some areas of mitigation interest in your community?



**Land Use
Ordinances**



**Local Building
Codes**



**Management
Best Practices**



**Mitigation
Projects**



**Community
Identified
Mitigation
Programs**

Five Action Categories	Land Use Ordinances	<ul style="list-style-type: none"> • Zoning, Open space preservation • Floodplain management, Stormwater management • Coastal zone management • Setbacks, Freeboard requirements, Higher standards
	Local Building Codes	<ul style="list-style-type: none"> • Local Inspections & Enforcement • International Building Codes • Local Regulations, Permitting Development
	Best Management Practices	<ul style="list-style-type: none"> • Hazard Mitigation Plan is a living document – update often • Integrate Natural Hazards into other Planning Efforts • Community resource management • Inter-Agency Agreements, Increase capability through partnering • Lessons learned for process improvement • Education and Training for local staff (EMI)
	Mitigation Projects	<ul style="list-style-type: none"> • Floodproofing, Relocation, Elevation, Demolition, and Acquisition • Elevate or bury utilities • Drainage Improvements (Bridge, Culverts, Dams, Levees, etc) • Restoration of Beaches, Dunes Wetlands, Erosion Control, Soil Stabilization • Non-Structural and Structural Retrofits • Safe Room Construction
	Community Identified Mitigation Programs	<ul style="list-style-type: none"> • CRS, Firewise, StormReady • National Dam Safety Program • Community Emergency Response Teams • Community Outreach and Risk Awareness - Turn Around Don't Drown

Next Steps

- The State and FEMA will determine the path forward and scope for the study based on data and discussions with community
- Communities will be notified of the decision
- Information gathered will help the communities make better informed decisions to address the flood hazard risks that are identified



Questions?

Rio Hondo Watershed
Discovery Meeting

Pre-Discovery Webinar

September 4, 2014

Bill Borthwick, State NFIP Coordinator

