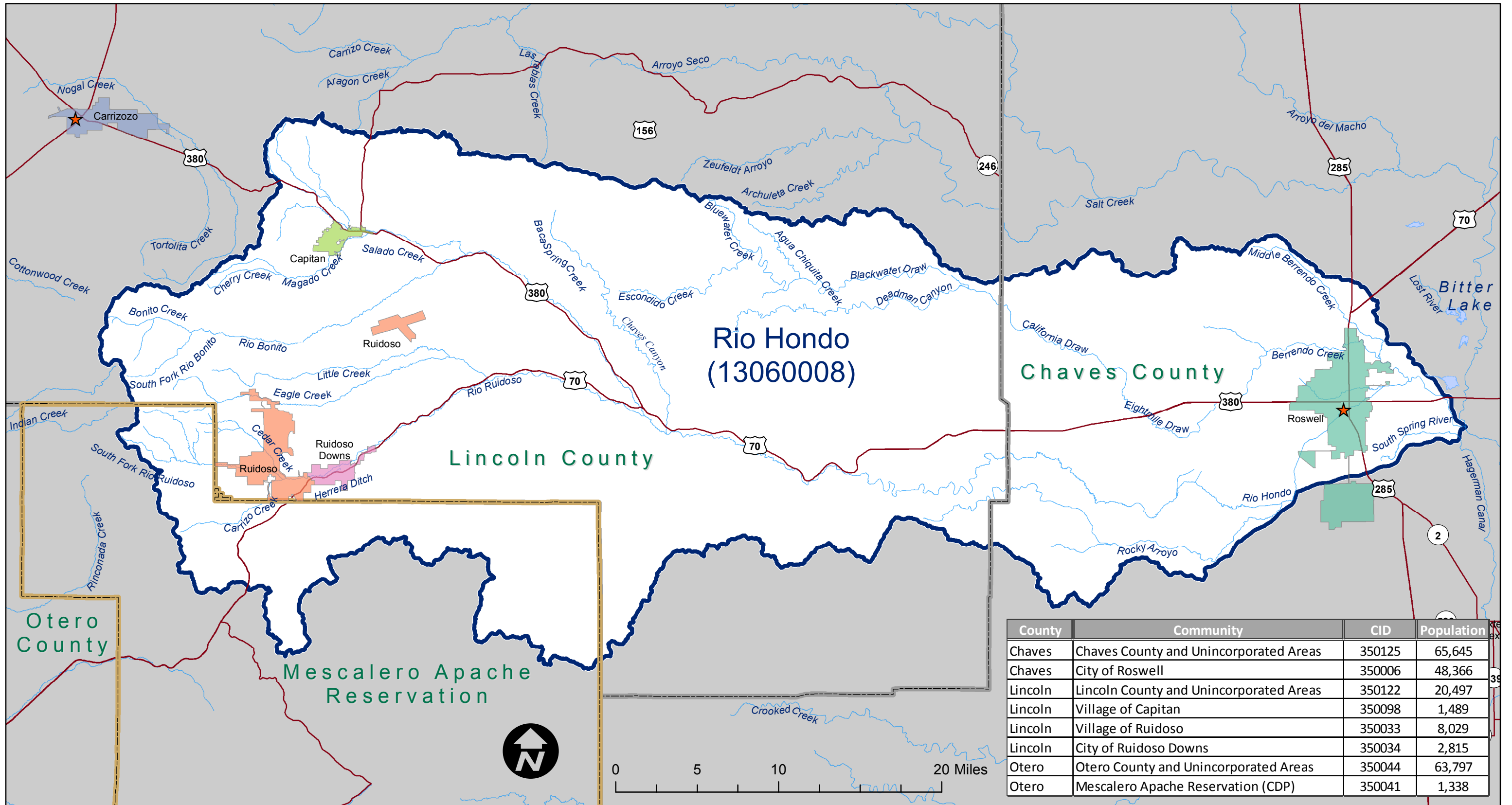


# Discovery Map: Rio Hondo Watershed Locator Map



County	Community	CID	Population
Chaves	Chaves County and Unincorporated Areas	350125	65,645
Chaves	City of Roswell	350006	48,366
Lincoln	Lincoln County and Unincorporated Areas	350122	20,497
Lincoln	Village of Capitan	350098	1,489
Lincoln	Village of Ruidoso	350033	8,029
Lincoln	City of Ruidoso Downs	350034	2,815
Otero	Otero County and Unincorporated Areas	350044	63,797
Otero	Mescalero Apache Reservation (CDP)	350041	1,338

## MAP SYMBOLOLOGY

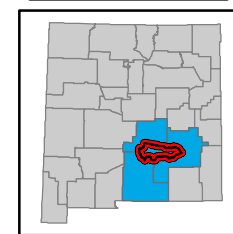
- HUC-8 Boundary
- Major Road
- County Boundary
- County Seat
- Reservation Boundary
- Lake
- Municipal Boundary
- River

## NOTES TO USERS

All information on this map came from public data. Imagery, roads, and political boundaries were supplied by the New Mexico Resource Geographic Information System and ESRI. Hydrographic Features (Streams and HUC Boundaries) were provided by the USGS National Hydrography Dataset (NHD) or delineated using USGS NED data. Population data are from the US Census Bureau American FactFinder website.

For more information about the data displayed on this map please contact:  
 Earth Data Analysis Center, UNM  
 MSC01 1110 1 University of New Mexico  
 Albuquerque, New Mexico 87131-0001

## WATERSHED LOCATOR



**NATIONAL FLOOD INSURANCE PROGRAM**  
**DISCOVERY MAP: LOCATOR**

RIO HONDO WATERSHED  
 NEW MEXICO

HUC-8 Code  
 13060008

RELEASE DATE  
 06/03/2014