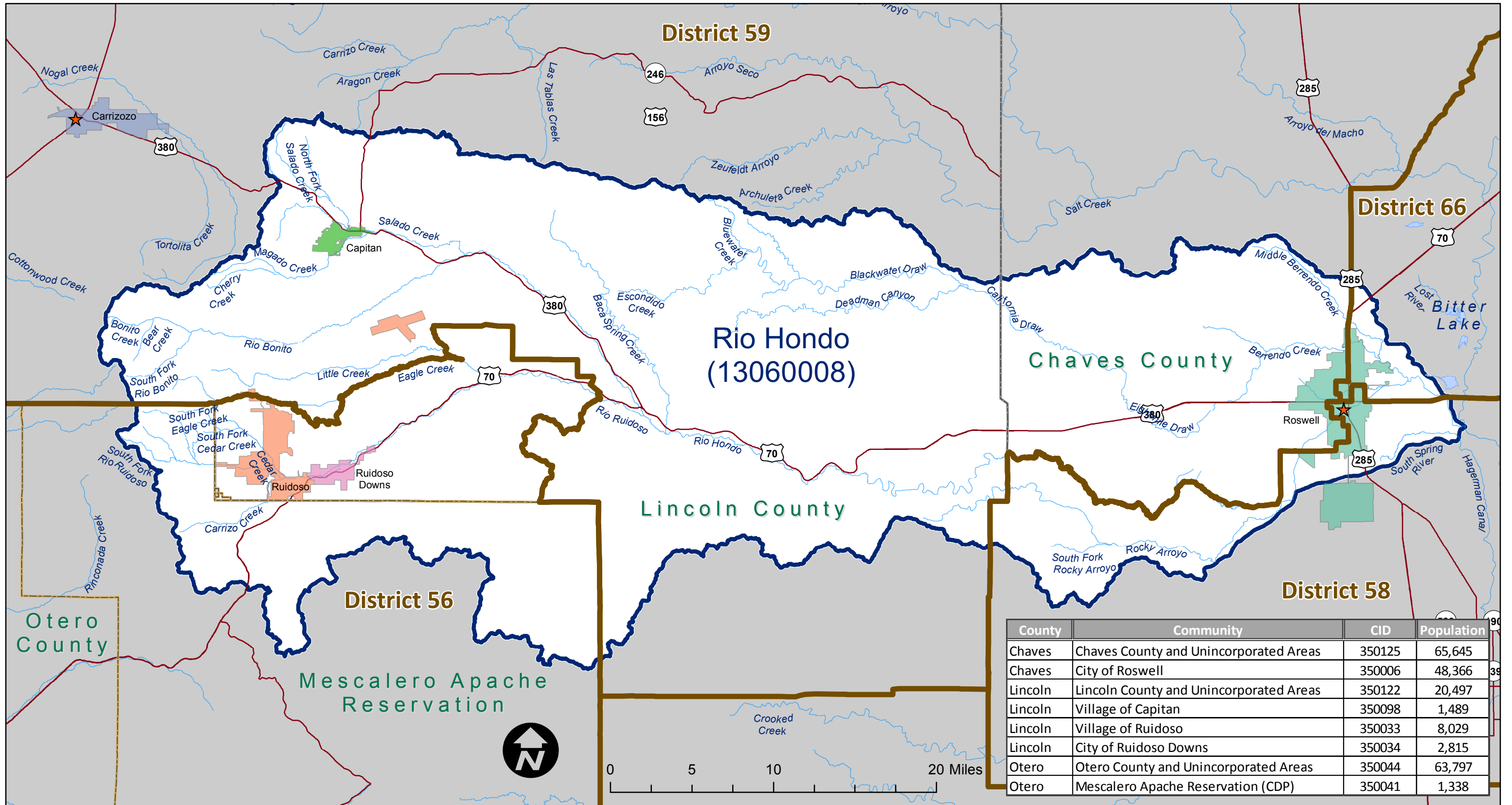


Discovery Map: Rio Hondo Watershed Locator Map with State House Districts



County	Community	CID	Population
Chaves	Chaves County and Unincorporated Areas	350125	65,645
Chaves	City of Roswell	350006	48,366
Lincoln	Lincoln County and Unincorporated Areas	350122	20,497
Lincoln	Village of Capitan	350098	1,489
Lincoln	Village of Ruidoso	350033	8,029
Lincoln	City of Ruidoso Downs	350034	2,815
Otero	Otero County and Unincorporated Areas	350044	63,797
Otero	Mescalero Apache Reservation (CDP)	350041	1,338

MAP SYMBOLOLOGY

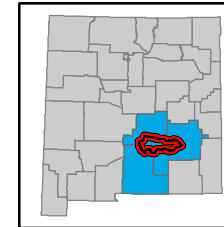
- HUC-8
- County Boundary
- Reservation Boundary
- Municipal Boundary
- State House Districts
- Major Road
- County Seat
- Lake
- River

NOTES TO USERS

All information on this map came from public data. Imagery, roads, and political boundaries were supplied by the New Mexico Resource Geographic Information System and ESRI. Hydrographic Features (Streams and HUC Boundaries) were provided by the USGS National Hydrography Dataset (NHD) or delineated using USGS NED data. Population data are from the US Census Bureau American FactFinder website.

For more information about the data displayed on this map please contact:
 Earth Data Analysis Center, UNM
 MSC01 1110 1 University of New Mexico
 Albuquerque, New Mexico 87131-0001

WATERSHED LOCATOR



**NATIONAL FLOOD INSURANCE PROGRAM
 DISCOVERY MAP: LOCATOR**

RIO HONDO WATERSHED
 NEW MEXICO

HUC-8 Code
 13060008

RELEASE DATE
 06/03/2014